

Members of the Worcestershire Partnership Board who are committed to working together to achieve the Community Strategy for Worcestershire



Local Government

Worcestershire County Council
Bromsgrove District Council
Malvern Hills District Council
Redditch Borough Council
Worcester City Council
Wychavon District Council
Wyre Forest District Council
Worcestershire County
Association of Local Councils

Public Service

Employment Service
Learning and Skills Council
National Probation Service, West Mercia
Redditch & Bromsgrove Primary Care Trust
South Worcestershire Primary Care Trust
University College Worcester
West Mercia Constabulary
Wyre Forest Primary Care Trust

Voluntary and Community

Community First
Worcester Diocese
Local Development Agency Network
Worcestershire Racial Equality Council

Business

Chamber of Commerce –
Herefordshire and Worcestershire
Individual board members from businesses
in Worcestershire:
HSBC Bank plc
Thomas Vale Construction plc

Local Strategic Partnerships

Bromsgrove Partnership
Vision 21 Malvern Hills Partnership
The Redditch Partnership
Worcester Alliance
Wyre Forest Matters

“What will Worcestershire be like when I’m ten?”

Copies of this booklet can be made available in larger print, Braille or audio cassette on request.

Call 01905 766642

If you need help with understanding this in your own language, contact **Ethnic Access.**

Call 01905 25121

এটার জন্য কি সাহায্য দরকার? টেলিফোন : ০১৯০৫ ২৫১২১
需要幫助嗎? 請致電 01905 25121
ਇਹਦੇ ਬਾਰੇ ਮਦਦ ਦੀ ਲੋੜ ਹੈ? ਨੰਬਰ 01905 25121 'ਤੇ ਫੋਨ ਕਰੋ।
Bisogna di aiuto con questo? Telefona 01905 25121
Jezeli potrzebna pomoc do tego, zadzwoń: 01905 25121
01905 25121: کیا آپ کو اس کیسے مدد کی ضرورت ہے؟ ٹیلیفون

Thanks to the children of Stanley Road Primary School for supplying the paintings.

**A ten year
community strategy**

“I want Worcestershire to be somewhere that’s great to live and for me to grow up in”

This booklet is designed to tell you about the Community Strategy for Worcestershire. It’s a vision, a plan for the next ten years that sets out what you told us needed doing, the goals we have for making your County a better place to live, the ways the Worcestershire Partners are going to achieve them, and how you will be able to judge our success. It’s been developed in response to the things you told us you wanted. It’s a way of working together for what we all want.

What is Worcestershire Partnership?

Worcestershire Partnership is a group of various local government authorities, health and learning providers, police and probation, other public agencies, voluntary, community and environmental organisations and local businesses. We have all joined together to try to deliver this vision for the future. We will continue to provide our own services individually but strive wherever possible as a group to work towards dealing with all the issues you have highlighted.

This plan looks forward to the next ten years but every three years we will ask you if we are still on the right track or whether you feel some priorities need to change. This is just the start – as we go we will continually check and monitor the progress we are making.

If you would like a copy of the Community Strategy in full, then contact:

Maggie Bryan, Area Democracy Officer

Tel: **01939 637428** e-mail: mbryan@worcestershire.gov.uk

Margaret Reilly, Policy and Review Officer

Tel: **01905 766150** e-mail: mreilly@worcestershire.gov.uk

Write or call in: **Worcestershire County Council, County Hall, Worcestershire, WR5 2NP**

or visit www.worcestershire.gov.uk/communitystrategy



“I want Worcestershire to be a place where everyone is healthy and well looked after”



Our Vision: Communities that are healthy, and support vulnerable people.

You told us you wanted Worcestershire to be a County in which individuals and communities enjoy healthier lifestyles and accept responsibility for their own health. When people do require social or health care we will ensure that the right service is available quickly, in the right place, at the right time. We will work together to protect vulnerable children and adults.

What we'll do to achieve the vision

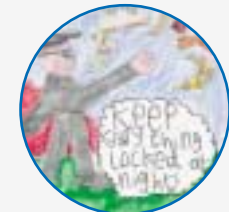
- Guarantee that you will be able to see a doctor within 48 hours by 2004 and a nurse, dentist or other health professional within 24 hours
- Help you to improve your own health
- Support older people to live independent lives
- Enable and support adults with physical and learning difficulties to live independently
- Promote good mental health
- Support families at risk of breakdown by providing help and support at an early stage
- Support and protect vulnerable children

How you'll know we've done it

- Waiting times will have been reduced and access to health services improved
- Less people will be dying from heart disease, cancer, strokes, suicides and accidents
- Older people will find it easier to get the services they need to live healthy and independent lives
- People with physical disabilities, sensory impairments and learning disabilities will be living well supported in their local community



“I want Worcestershire to be a place where people feel safe and never worry about crime”



Our Vision: Communities that are safe, and feel safe.

You told us you'd like Worcestershire to be a safer place to live, work, learn, travel and do business. A County where crime is less frequent, and the fear of crime is reduced.

What we'll do to achieve the vision

- Work with local communities to achieve solutions to local crime and safety problems
- Promote involvement in all local family support programmes
- Support victims of crime
- Increase the number of police officers and use neighbourhood wardens as a visible official presence on the streets
- Tackle hate crime
- Raise awareness of domestic violence and provide access to refuges for victims
- Respond speedily and efficiently to civil emergencies such as flooding

How you'll know we've done it

- New initiatives will be implemented e.g. introducing CCTV, closing off alleyways, improving street lighting to combat crime
- Less crime in your area and regular information on progress
- You will feel safer at home, on the streets and in your place of work
- You will be taken seriously and treated with consideration and respect if you report a crime or if you are a victim of crime
- Our roads will be safer

“Worcestershire should be a place where anyone can learn new things, any time in their life”

Our Vision: Learning and skills for everyone, at every age.

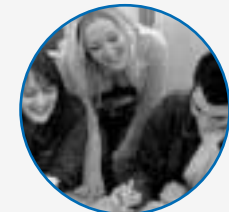
You told us you want Worcestershire to be a County where people will be able to acquire the skills, knowledge and self esteem they need to allow them to be active citizens and achieve personal fulfilment.

What we'll do to achieve the vision

- Work with partners, to provide high quality educational opportunities for children and young people
- Continue to raise educational standards in all our schools for all our pupils
- Provide one-to-one support and guidance for young people via the Hereford and Worcestershire ConneXions Service
- Support further expansion of University College Worcester
- Encourage greater participation and support in learning for people of all ages
- Encourage all members of all communities to achieve their full potential, and develop skills training to meet the needs of employers

How you'll know we've done it

- More childcare places will be available
- More of our children will leave school having obtained 5 or more GCSEs
- More of our young people will go on to further learning or training
- More adults will be engaged in learning opportunities or undertake training courses
- Training opportunities will be more widely available and easier to access
- More employers will be developing the skills of their workforce



“I want Worcestershire to be somewhere that’s good to do business – and everyone profits”



Our Vision: Economic success that is shared by all.

You told us you wanted Worcestershire to continue to be prosperous. By building on our strengths and by diversifying and modernising to meet the needs of a changing economy we plan to achieve this. All our economic activities will aim for long-term success and will balance economic, social and environmental needs.

What we’ll do to achieve the vision

- Ensure premises and sites are available for new investors and local companies who wish to expand
- Expand and modernise the economy in Worcestershire
- Keep towns, villages and surrounding areas vibrant and prosperous
- Offer business support to both established and new businesses in the County
- Promote the County of Worcestershire and its many attractions whilst ensuring protection of the environment

How you’ll know we’ve done it

- There will be a wider range of high quality job opportunities available to local people
- Businesses will notice that the technological skills they require are available locally
- There will be vibrant, prosperous market towns and villages
- Worcestershire will be promoted on the national stage as a place to visit and there will be more visitors to the County

“I want Worcestershire to be a beautiful environment – for all of us now and the kids in the future”



Our Vision: A better environment – for today and for our children.

You told us you would like Worcestershire’s environment and everything it contains to be protected, conserved and enhanced to ensure that we keep the best of our inheritance for future generations.

What we’ll do to achieve the vision

- Protect and enhance the landscape and its associated wildlife within the County
- Develop a Climate Change Plan for the County that contributes towards national and international actions tackling the causes and effects of climate change
- Promote and develop Farmers Markets and the sale of local produce
- Encourage the active management of woodlands
- Increase access to our countryside
- Ensure housing provision includes all housing types including affordable and social housing
- Manage recycling, fly-tipping, litter and waste issues

How you’ll know we’ve done it

- There will be less litter on the streets
- There will be more recycling facilities
- New development will be locally distinctive and environmentally sensitive
- Individual features within the landscape will be protected
- There will be increased sign posting and rights of way will be easier to use
- You will have more opportunities to enjoy Worcestershire’s landscape and natural resources
- Rare species of wildlife will be protected and their numbers will increase



“I’d like Worcestershire to be a place where everyone cares about what goes on – and feels part of it”



Our Vision: Connecting Worcestershire.

You told us you wanted Worcestershire to be vibrant and to celebrate diversity, to include everyone and give them equal access to public services and to opportunities to take part in community life so that they'll be able to influence decisions which affect them and have a strong sense of citizenship.

What we'll do to achieve this vision

- Use modern technology to improve access to all local services
- Ensure young people at risk, minority ethnic groups and those living in rural communities are fully involved in relevant projects
- Provide a transport system that is safe, efficient, clean and fair, and improve bus services along key routes
- Make use of any sources of funding available to develop solutions to transport problems and recognise the role of 'community transport'
- Promote Worcestershire's needs at a regional, national, european and international level

How you'll know we've done it

- Your enquiries will be dealt with first time where possible
- You will have the opportunity to be involved in your local community if you choose to be
- Facilities and opportunities available to young people will increase
- It will be easier, and less confusing, to access public services, and your questions will usually be dealt with in one place and at one time
- Public transport services will have improved, and you will notice that there is better information, services and facilities
- Public transport will be safer and accessible to all

