

Preparing for Severe Weather in Worcestershire

Richard Davis-Leech
Emergency Planning Officer

Content

- What is Severe Weather
- Worcestershire Severe Weather Group
- Representation
- What are the Severe Weather Risks
- What Resilience Measures do we have in place
- Questions

What is Severe Weather?

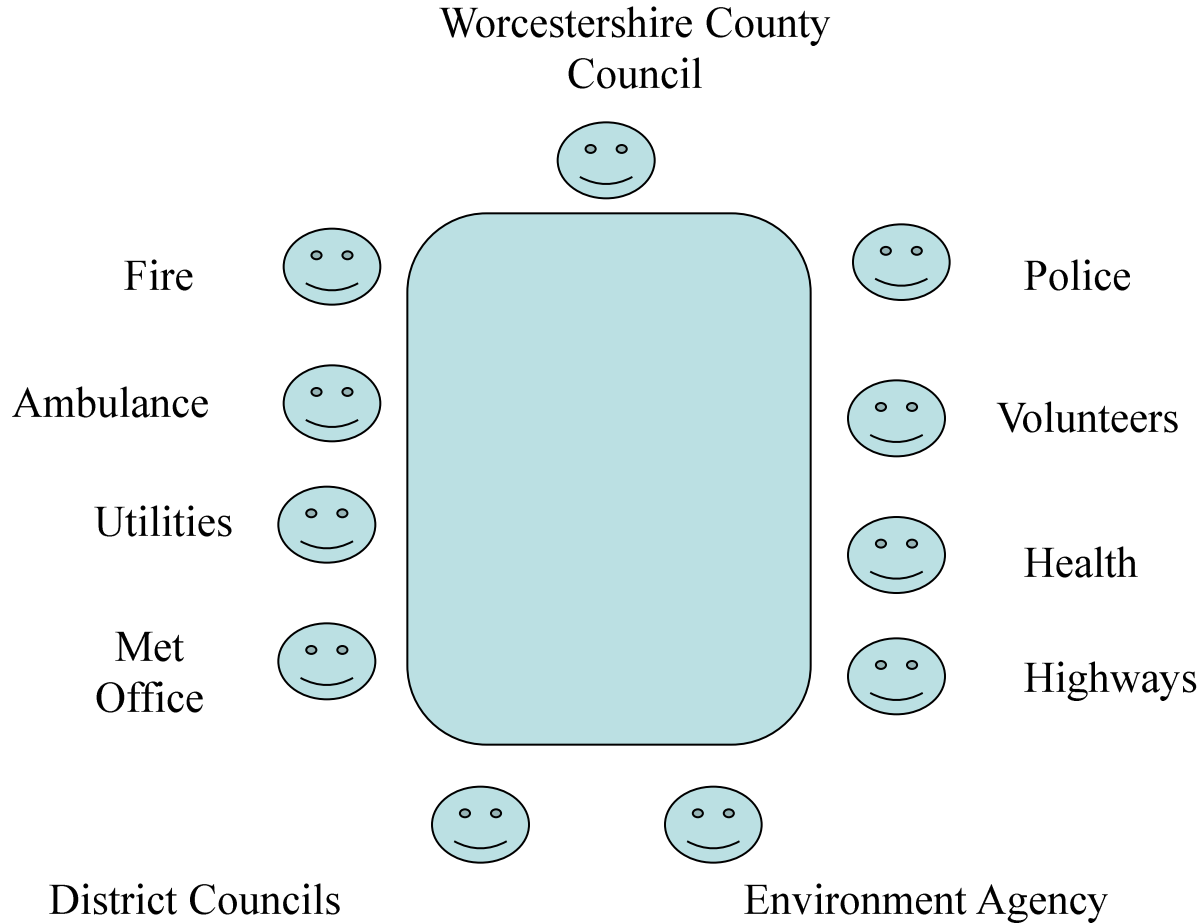
- **Severe weather** refers to any dangerous meteorological phenomena with the potential to cause damage, serious social disruption, or loss of human life.

Wikipedia 2011

Worcestershire Severe Weather Group

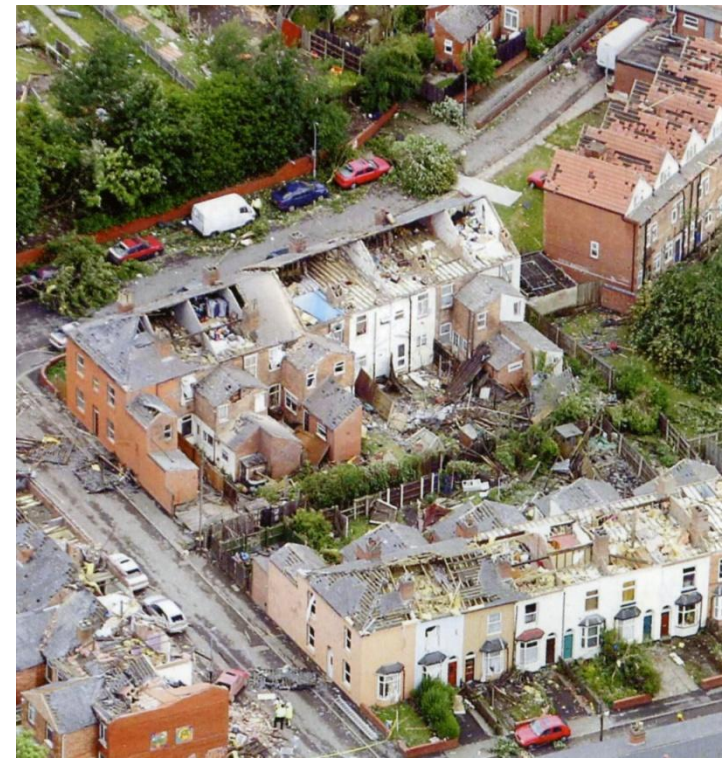
- Part of the Local Resilience Forum Structure for West Mercia
- Chaired by the Emergency Planning Team
- Meet 3-4 times a year
- Discuss a single Weather related topic at each meeting, before the 'expected' season occurs
- Review plans, identify gaps, fill gaps identified
- Horizon Scan for new threats

Who is represented on the group?



What are the Severe Weather Risks?

HIGH WINDS / TORNADOES



EXTREME WINTER WEATHER



HEATWAVE



EXTREME RAINFALL



FLOODING



DROUGHT



Resilience Measures in Place

5 x District Area based Multi Agency Flood Plans



DRAFT

Wychavon District
Council
Multi-Agency Flood
Plan

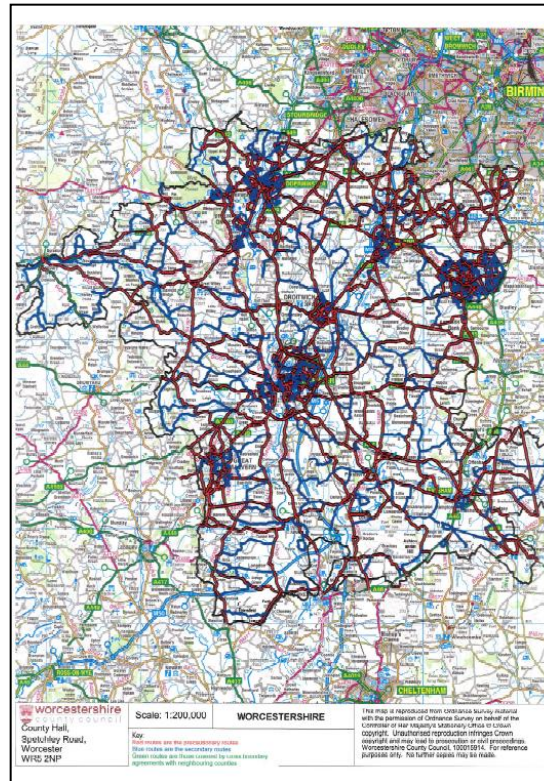


Winter Weather Arrangements

Winter Service Policy Cabinet November 2009

Winter Service Policy

Document Details:
 Status: Final version 1.0
 Date: October 2009
 Document Location:
 U:\U163 ESU343 Winter Maintenance\13 Policy\2009 Policy
www.worcestershire.gov.uk



Heatwave Planning

Worcestershire
HEATWAVE PLAN
 Valid from 1 June 2010 - 30 September 2010

STAKEHOLDER ORGANISATIONS:

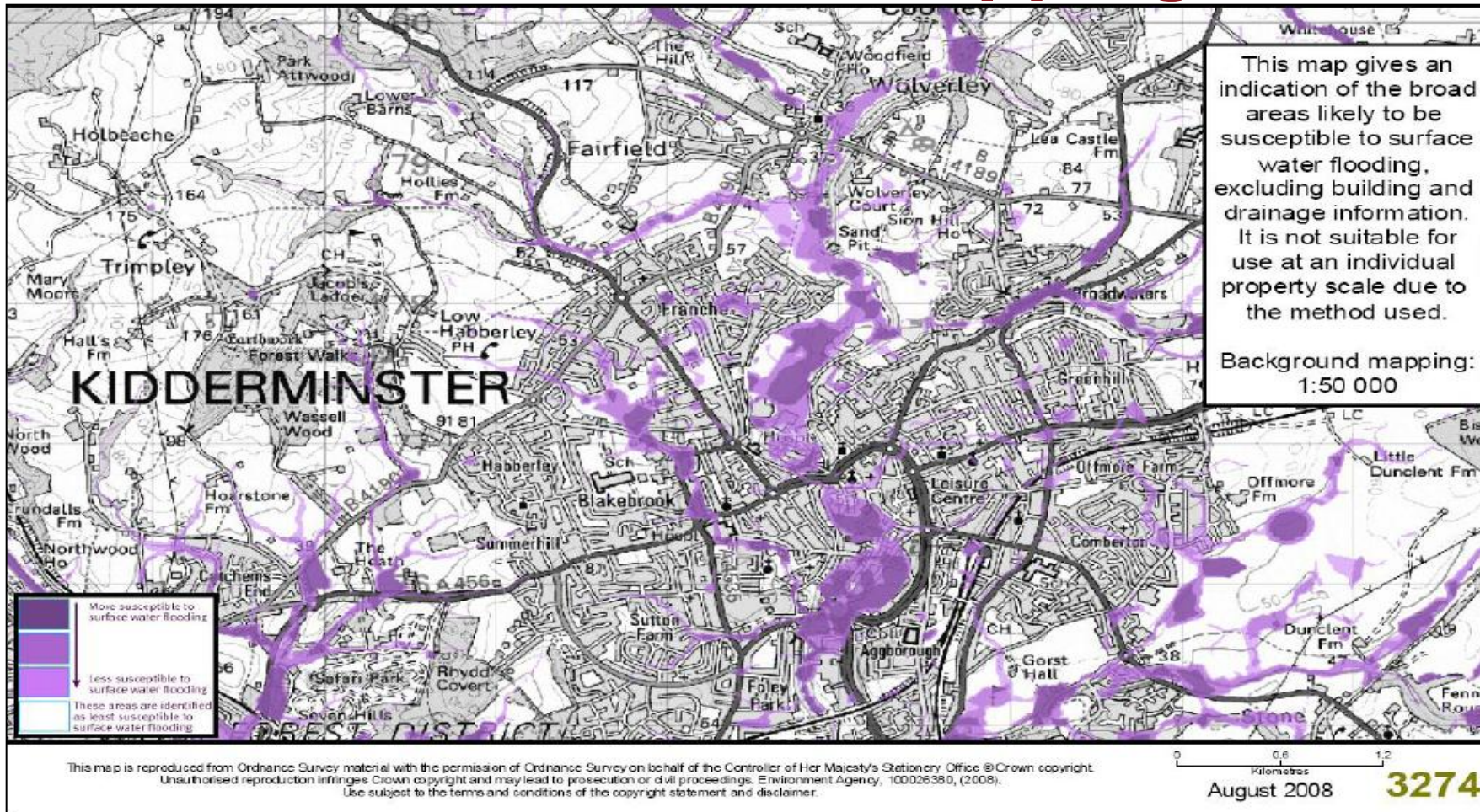
Worcestershire Primary Care Trust
 Worcestershire County Council
 Worcestershire Mental Health Partnership NHS Trust

Version	FINAL 1.0
Author	Sharon Buckley, Emergency Planning Manager Worcestershire PCT & Worcestershire MHPT Libby Tassell, Emergency Planning Officer Worcestershire County Council
Responsible Officer	Chief Executive officers of Stakeholder Organisations
Date for Review	01 April 2011
Intended Audience	All healthcare and social care staff within the NHS & WCC in Worcestershire
Related Documents	<i>NHS Heatwave Plan for England 2010</i> <i>Heatwave – Looking after yourself and others during hot weather – the latest advice</i> <i>Heatwave – Supporting vulnerable people before and during a heatwave (Advice for Health and social care professionals)</i> <i>Heatwave – Supporting vulnerable people before and during a heatwave (Advice for care home manager and staff)</i>
Previous Documents	This plan supersedes all previous Worcestershire Heatwave Plans

1



Surface Water Mapping



Voluntary Sector Co-ordination

County Volunteers Emergency Committee

Voluntary Sector Emergency Response Protocol

Document Details:

Status: Version 1

Date: 19th March 2010

Contact: Mike Warner, Emergency Planning Officer, mwarner@worcestershire.gov.uk

www.worcestershire.gov.uk

 **worcestershire**
county council



Questions?

Contact:

rdavis-leech@worcestershire.gov.uk

01905 766 173

