

Waste Recycled

Indicator

The amount of waste recycled

Status



The amount of household waste recycled in Worcestershire is good, and neither worsening or improving.

Overview

Worcestershire is aiming to recycle and compost as much household waste as possible through kerbside collections, recycling sites, household waste sites and treatment processes. The national target for recycling and composting of household waste was 25% for 2005/06 and 40% for 2010.

A new Commingled Materials Reclamation Facility (EnviroSort) has been opened at Norton. This facility is operated on behalf of Worcestershire County Council and Herefordshire Council by Severn Waste Services. It accepts household waste from kerbside recycling collections across the two counties. The range of materials that can be separated for recycling has increased with the commissioning of this facility.

Performance

In 2009/10, 74,950 tonnes (28.99%) of household waste was recycled in Worcestershire. In the same period, 32,796 tonnes (12.69%) of green waste was composted.

According to the most recent data from the Defra '*Survey Of Commercial And Industrial Waste Arisings 2010*' for the year 2009, 51.1% of all industrial waste and 52.8% of all commercial waste nationally was recycled or re-used.

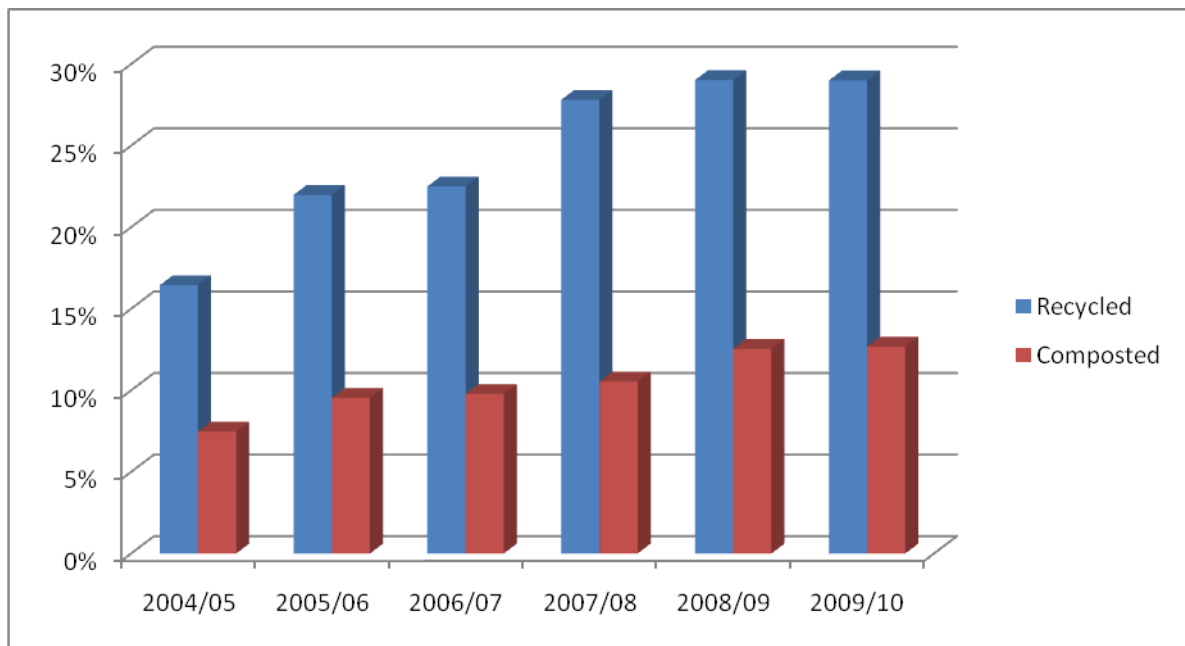
Tonnes of Household Waste Generated, Recycled and Composted

	Household Waste	% Change	Recycled	% Change	Composted	% Change
2004/05	297,937	+3.3	48,995	+23.42	22,268	+46.2
2005/06	290,944	-2.3	63,952	+30.5	27,752	+24.6
2006/07	287,833	-1.1	64,762	+1.3	28,155	+1.5
2007/08	272,356	-5.4	75,739	+16.9	28,702	+1.9
2008/09	267,038	-1.95	77,494	+2.3	33,503	+16.7
2009/10	258,516	-0.03	74,950	-0.03	32,796	-0.02

Source: Waste Management Services, Worcestershire County Council, 2011

In 2009-10 Worcestershire recycled, reused or composted 41.7 percent of its household waste and maintained its level of diversion from landfill

Percentage of Household Waste Recycled and Composted



Source: Waste Management Services, Worcestershire County Council, 2011

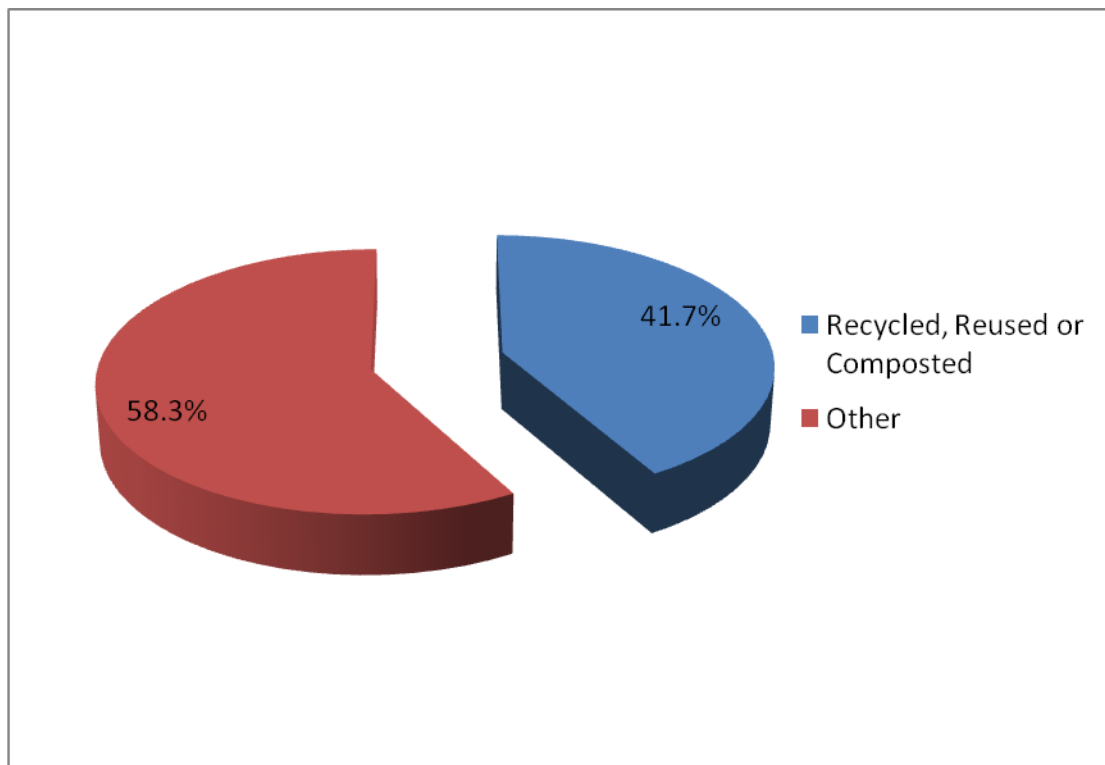
In terms of industrial recycling, it is difficult to determine how well the county is performing. The most recent Environment Agency data is now quite old, but showed that Worcestershire recycled or re-used 37.7 percent of its industrial waste in 2002/03, compared with 64.2 percent in 1998. During that time, the County also experienced a significant reduction, of 42.6 percent, in the amount of industrial waste generated. The most recent study into commercial and industrial waste arisings (the Defra *Survey of Commercial and Industrial Waste Arisings 2010*) does not give detail of these trends.

Commercial recycling/re-use of waste increased by 3.8 percent between 1998 and 2002/03, from 27.5 percent to 31.3 percent.

The following represents the most recent available data relating to recycling in Worcestershire:

Household Waste

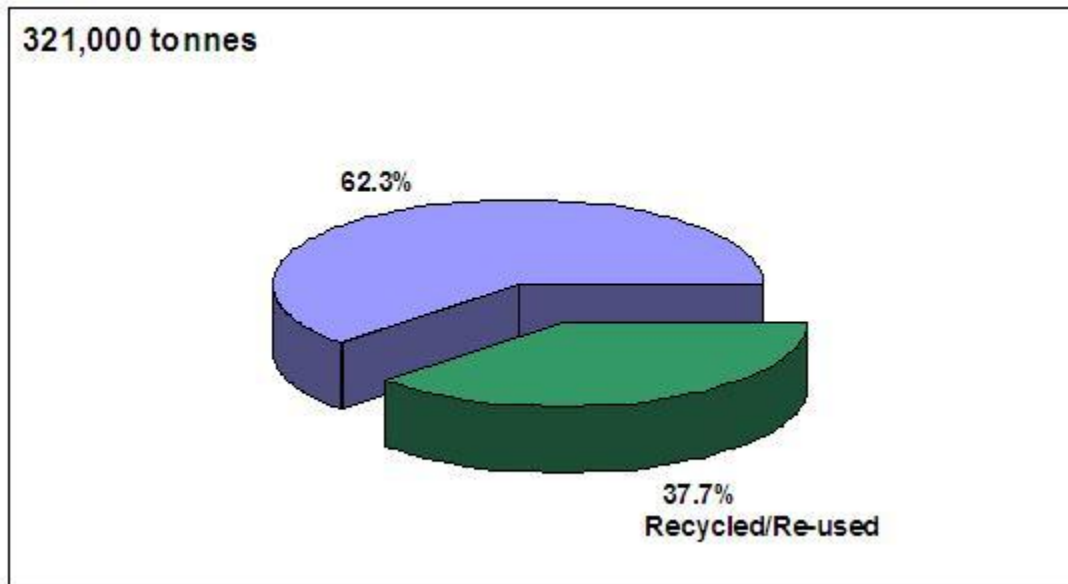
Worcestershire produced 258,516 tonnes of household waste in 2009/10 of which 41.7 percent was recycled or composted.



Source: Waste Management Services, Worcestershire County Council, 2010

Industrial Waste

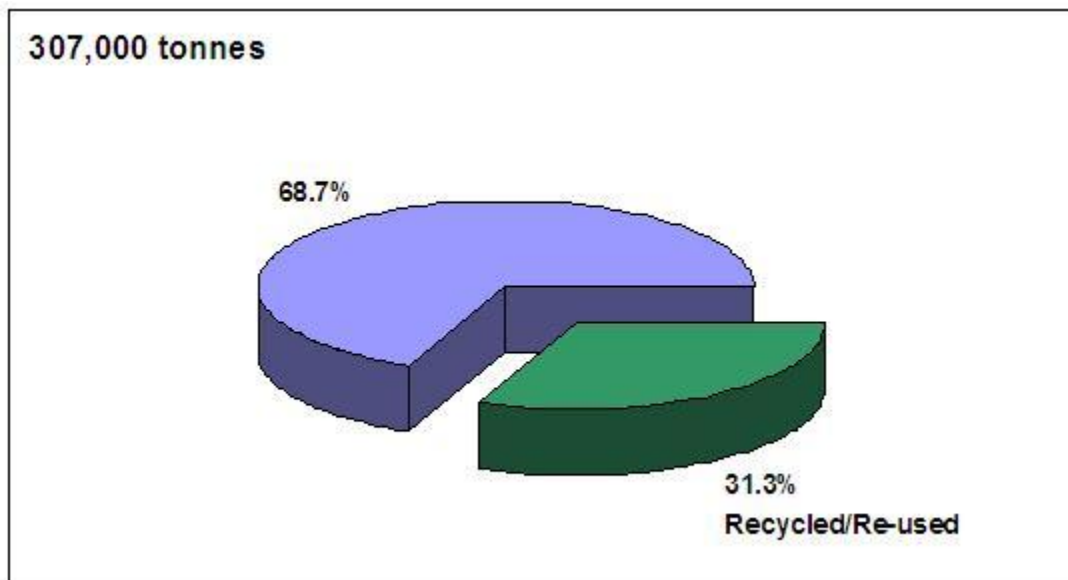
Worcestershire produced 321,000 tonnes of industrial waste in 2002/03 of which 37.7 percent was recycled or re-used.



Source: Environment Agency, 2002/03

Commercial Waste

Worcestershire produced 307,000 tonnes of commercial waste in 2002/03 of which 31.3 percent was recycled re-used.



Source: Environment Agency, 2002/03

Household recycling rates are available for local authority level. In Worcestershire, the combined recycling and composting rates are as follows:

Combined Recycling and Composting Rates by Local Authority

	2008/09	2009/10	Change
Bromsgrove	43.56%	37.37%	-6.19
Malvern Hills	27.46%	28.10%	0.64
Redditch	31.50%	29.10%	-2.40
Worcester	36.14%	33.60%	-2.54
Wychavon	32.75%	42.40%	9.65
Wyre Forest	28.36%	26.50%	-1.86

Source: Waste Management Services, Worcestershire County Council, 2011

The table shows that there is some variation between the six local authorities in Worcestershire. Overall Worcestershire is maintaining its levels of recycling and composting.

It is also possible to monitor how extensive kerbside collections are in each Local Authority. By 2009/10 all of the districts collected materials from the kerbside of more than 93% of their households.

Percentage of households with kerbside recycling collections by Local Authority, 2009/10

Bromsgrove	93.9%
Malvern Hills	100.0%
Redditch	95.5%
Worcester	96.9%
Wychavon	100.0%
Wyre Forest	97.9%

Geographical Context

In 2006/07, the latest year for which figures are available, Worcestershire's 32.3 percent of household waste recycled/composted was slightly higher than the corresponding figure of 28.6 percent for the West Midlands region.

The Environment Agency C&I Survey 2002/03 shows that the 121,000 tonnes (37.7 percent) of industrial waste recycled/re-used in Worcestershire was lower than the proportion of industrial waste recycled in the West Midlands region (50.2 percent). The 96,000 tonnes (31.3 percent) of commercial waste recycled in Worcestershire was lower than

the corresponding figure of 40.4 percent for the West Midlands region. The latest *West Midlands Strategic Waste Assessment*, in the year 2000, had shown that in 1998 Worcestershire's industrial and commercial recycling/re-use of waste was in line with the West Midlands region, but whilst recycling/re-use of waste has improved in Worcestershire, the region has improved to a greater extent. Of particular significance is the large drop in industrial recycling/re-use of waste in the County since 1998, compared with the increase regionally. The rapidly changing face of the industrial West Midlands may be a significant factor here.

Actions

Worcestershire will continue to strive for year on year improvement in the recycling and composting of household waste.

Further Information

For further general information see DEFRA's [Recycling and Waste](#) pages.

For more information on local authority waste performance visit the [Local Government Performance](#) pages on the Department for Communities and Local Government website.

For more information on Commercial and Industrial Waste see the Environment Agency's [Waste in the West Midlands](#) pages.

For more information on Worcestershire's Waste Management programme, including ways to reduce waste and increase recycling, see the [Let's Waste Less](#) pages.