

Climate Change in Worcestershire

- what it means for Worcestershire
- what we're trying to do about it.

Liz Alston (LAA Climate Change Lead)

**Cyclone victims sleep
among ruined homes**

**Andes glaciers gone
in 20 years**

**Arctic Summers
Ice-Free 'by 2013'**

**Climate Bill's 80%
Emission Cut**

**Economics
Say we Should
Act on Climate
Change**

**Hundreds backing bid
to help cut energy use**

Ice Loss Severe at Both Poles

FLOODS: Roads to be closed as water rises

**Bewdley shores
up for peak level**

**Poorest in Climate
Front Line**

**IPCC Issues Dire
Climate Warning**

**FLOOD TORRENT
WREAKS HAVOC**

**G8 aims to halve
greenhouse
gases**

**Eco-warrior pupils lead
the way in saving energy**



2007



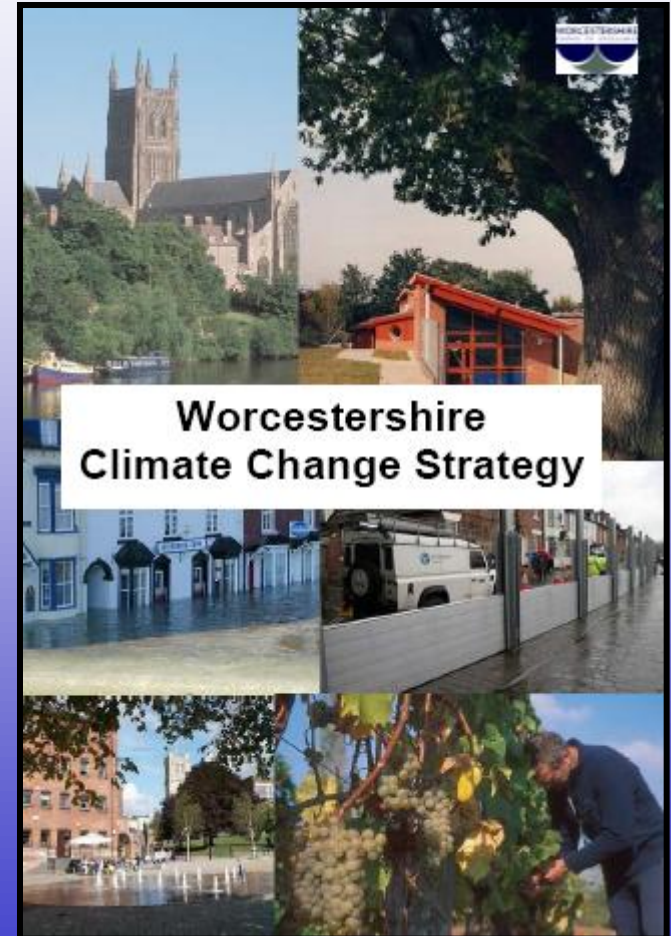
CroptHomeCanyon.co.uk

86% of residents concerned about climate change

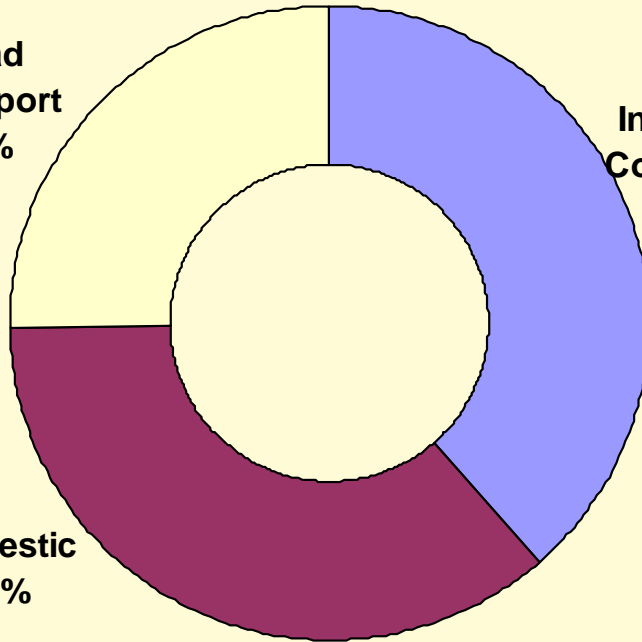
(Worcestershire Citizens' Panel survey June 07)

County Climate Change Strategy Review

- **Raise awareness**
- **Reduce emissions**
Target = 3% per year
- **Adapt to impacts**



Road
Transport
25%



Industry &
Commercial
39%

Domestic
36%

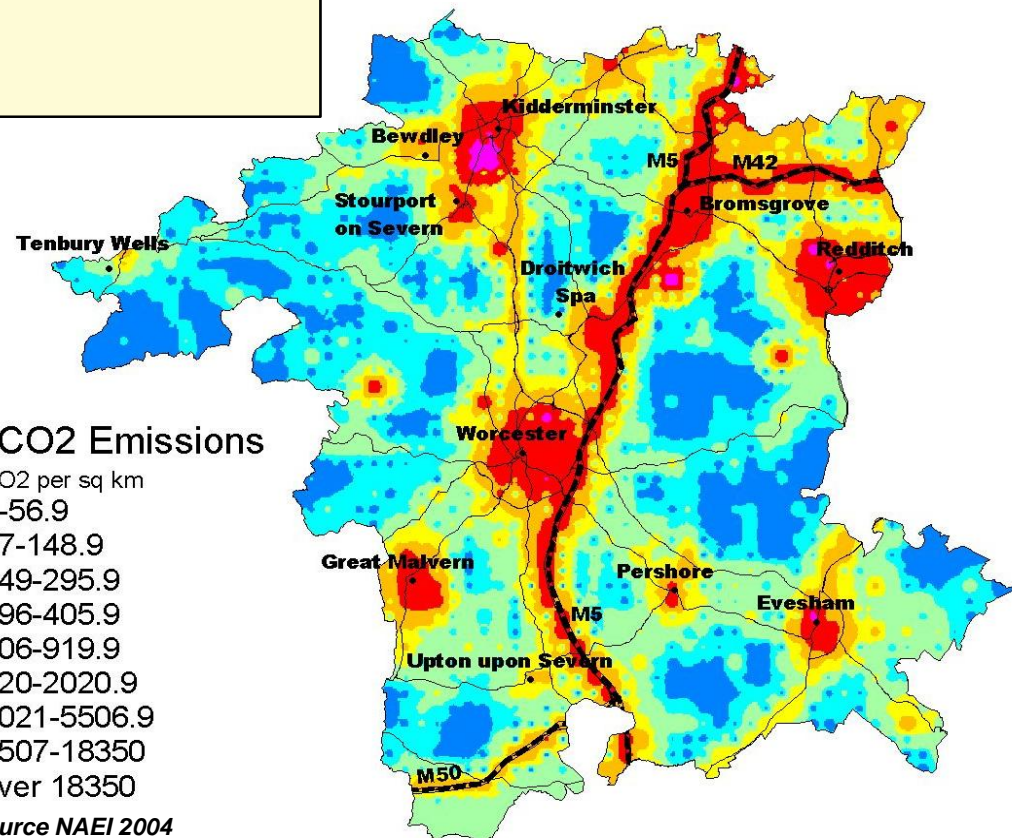
**2005 CO2 Emissions
= 4 Million Tonnes**

7.1 tonnes per capita

**(omits approx 1million tonnes
from motorways)**

Source DEFRA2008

**NI186 CO2
emissions per
person**



Home Energy Efficiency



**WYCHAVON
WARMER
HOMES**



Making business sense
of climate change

There's something
business needs
to talk about



Transport

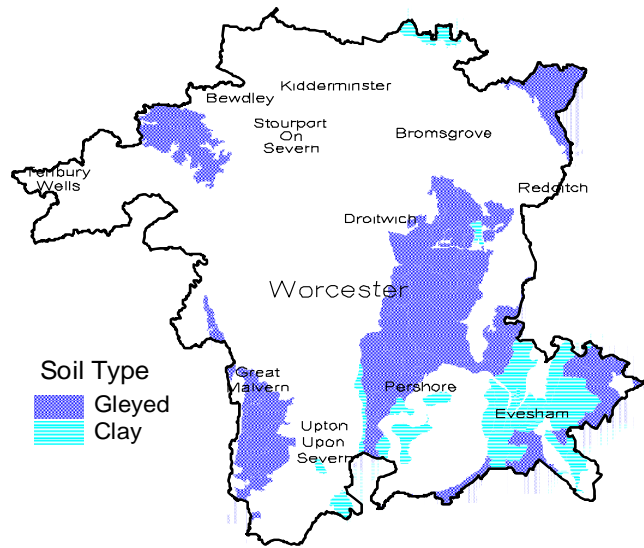


NI188: Climate Change Adaptation

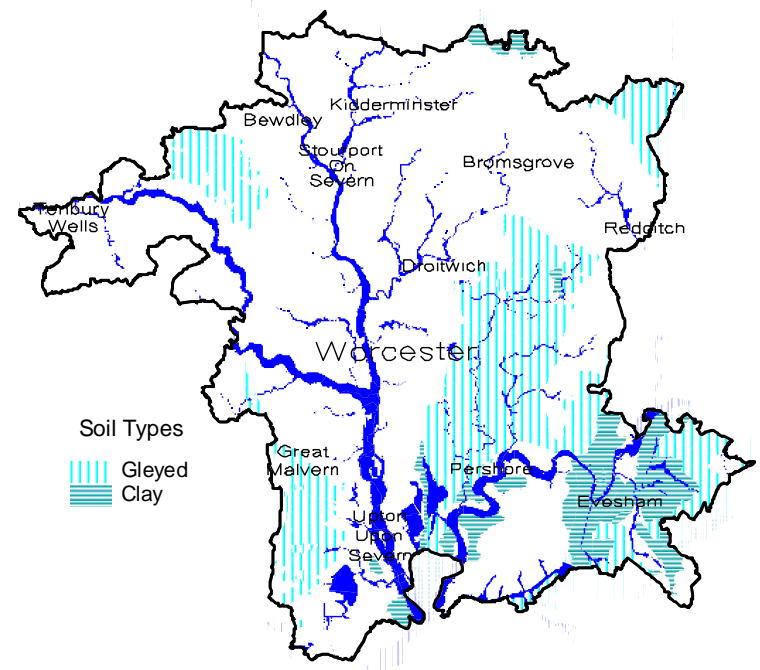
Preparing for the Impact of Climate Change

- Extreme weather & longer term trends

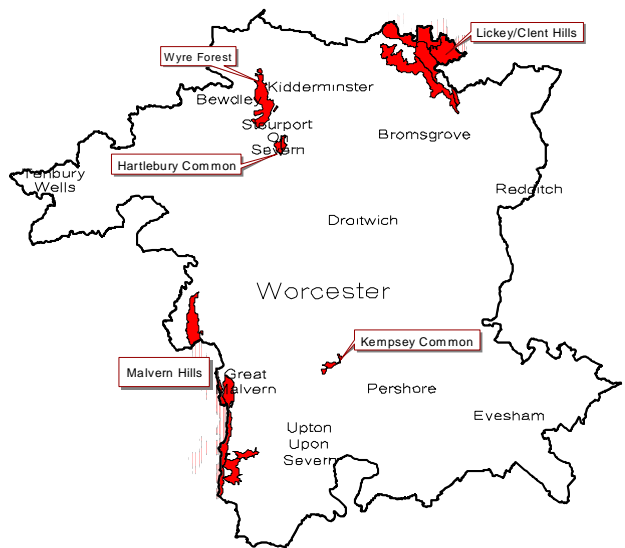




Subsidence Risk



Flood Risk



Outdoor Fire Risk

63% think they are already doing all they personally can to help reduce the impact of Climate Change

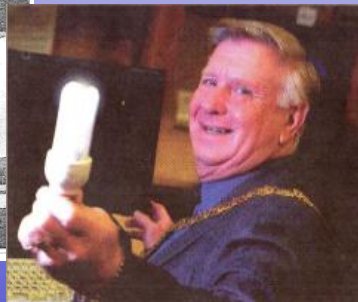
(Worcestershire Citizens' Panel survey June 07)

Hundreds backing bid to help cut energy use



Rupert Brakepear, left, Worcestershire County Council's education for sustainability officer, and councillor John Calms, celebrate with members of Redhill Primary School's eco-action team. Picture by John Anyon. 44207801

Pupils halve the school energy bill



Switch on to call to "switch it off"

Eco-warrior pupils lead the way in saving energy



Learning for Sustainability



Challenges & Opportunities

- **Regional Spatial Strategy - 36,000+ new homes**
- **Local Transport Plan 3**
- **Peak Oil/ Transition towns**
- **Renewable Energy**
- **Recession - Fuel Poverty**
 - **Green Technology – ‘Green collar’ jobs**
- **Extreme weather**

Multiple Benefits

- Save money
- Health
- Market advantage
- Job creation
- Protection from impacts of extreme weather
- Energy security

Climate Change in Worcestershire

www.worcestershirepartnership.org.uk

www.worcestershire.gov.uk/climatechange