

Worcestershire Partnership Environment Group

Dave Throup

Environment Agency and Chair of WPEG

Members Briefing

19th March 2009

The briefing

- What WPEG does?
- Membership
- How we work
- Our priorities
- WPEG and the Local Area Agreement
- Summary

What WPEG does?

- Brings together expertise from the public, private and voluntary sectors
- Advises the Partnership on environmental matters
- Monitors and reports on the state of Worcestershire's environment
- Delivers outcomes through partnership working

What WPEG does?

- Accountable for 5 LAA priorities
- State of the environment report
- Climate change reporting and strategy
- Provides a forum for discussion and debate
- Acts as a hub for specialist groups (eg: biodiversity and waste)

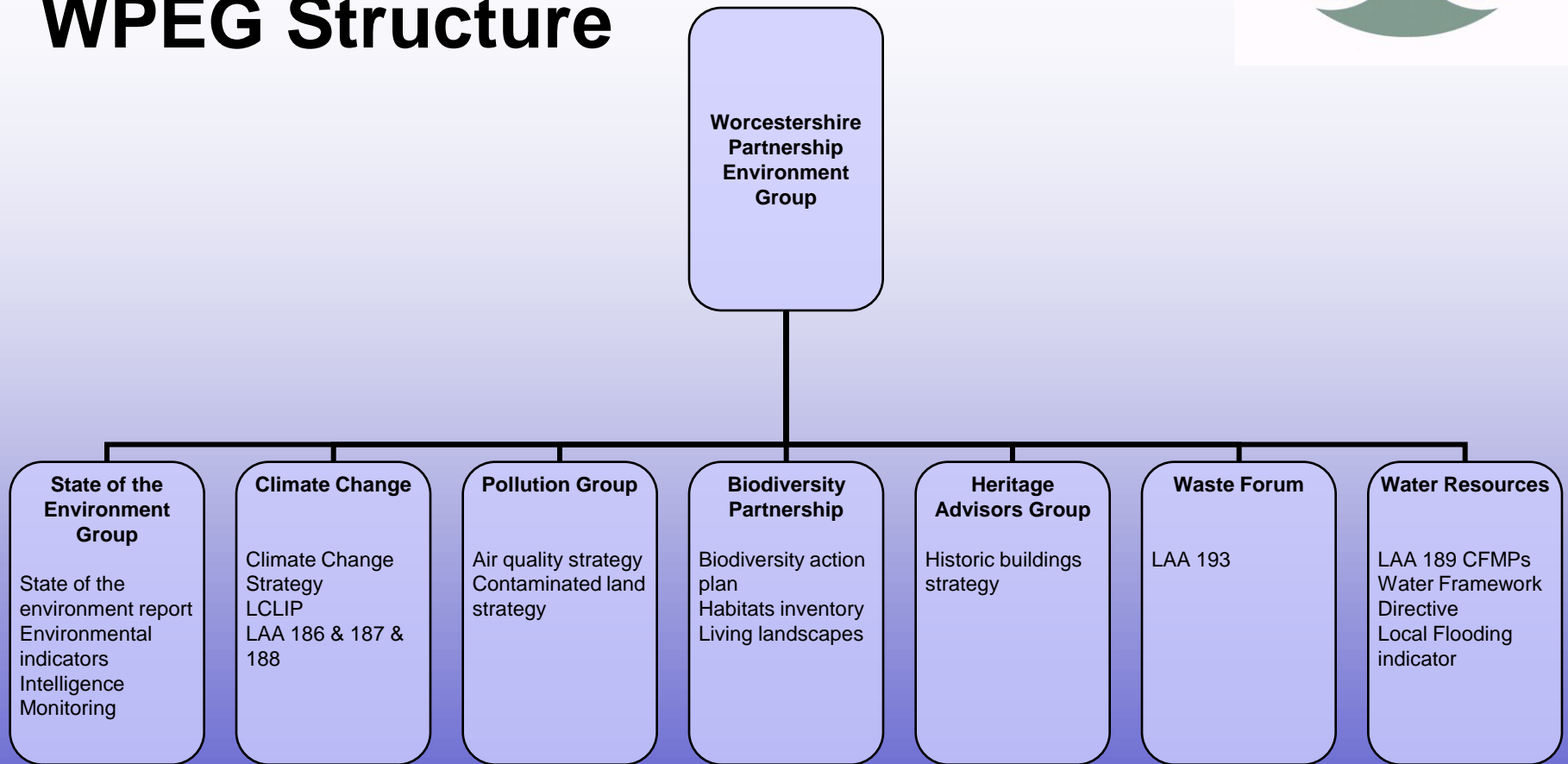
Membership

- Around 30 organisations
- Between us control hundreds of staff and £m's of expenditure
- Senior level representation

Membership

- **Worcestershire County Council**
- **6 District Councils**
- **6 district LSPs**
- **County and District councillor**
- **Chamber of Commerce**
- **Duckworth Trust**
- **Earth Heritage Trust**
- **Act on Energy**
- **Worcestershire Wildlife Trust**
- **British Waterways**
- **Environment Agency**
- **Forestry Commission**
- **Natural England**
- **English Heritage**
- **Country Land and Business Association**
- **Worcestershire Biodiversity Partnership**
- **Worcestershire Pollution Group**
- **Worcestershire Land Drainage Group**
- **Worcestershire Extreme Weather Group**
- **University of Worcester**
- **Worcester College of Technology**
- **Worcester Diocese**
- **CALC**
- **Farming and Wildlife Advisory Group**
- **Government Office for the West Midlands**

WPEG Structure



How we work

- Quarterly meetings of full WPEG
 - Topic led
 - Reports on sub groups, LAA delivery and District LSP progress
 - Networking!
- Sub groups meet as necessary
- Virtual network – information and consultation

A G E N D A

- i) Introductions/Apologies
- ii) Minutes of 3rd December 2008 and Matters Arising

1) **Information Items**

- (a) An Introduction to Environmental Health (Guy Revans)
- (b) River Basin Management Plans (Conor Doherty)
- (c) Severn & Avon Vales Wetland Partnership (Tim Adkin)
- (d) New Environment/Economy Policy Officer (DT/Jane)
- (e) Climate Change Strategy – Update (Liz Alston)
- (f) Progress report on WPEG's LAA Indicators:-
 - NI187 (Rachel Jones)
 - NI186 (Liz Alston)
 - NI188 (Liz Alston)
 - NI193 (Paul Beard)
 - Local Indicator on flooding (Steve Jordan)

2) **Item with recommendations/seeking views of WPEG**

- (a) Draft WPEG Protocol (Dave Throup)

3) **Task Group Briefing Notes (circulated beforehand)**

NB: briefing notes will only be commented on by exception

- (a) Climate Change Task Group (Liz Alston)
- (b) State of the Environment Report (Ben Horovitz)
- (c) Community Strategy Task Group (Ben Horovitz)
- (d) Streetscene & Open Spaces (David Manning)
- (e) Landscape & Biodiversity (Alexandra Kinnersley)
- (f) Historic Environment (Malcolm Atkin/Alan Taylor)
- (g) Material Resources & Waste (Steve Birch)
- (h) District LSPs
 - Bromsgrove (Rachel Jones)
 - Malvern Hills (Dave Throup)
 - Redditch (Ceridwen John)
 - Worcester City (James Somerville)
 - Wychavon (David Manning)
 - Wyre Forest (Jenny Moreton)
- (i) Worcestershire Partnership Board (Dave Throup)

4) **Any Other Business**

5) **Dates and Venues of Next Meetings**

- 3rd June 2009 (10.00–12.00) Duke House, Kidderminster
- 2nd September 2009 (10.00-12.00) VENUE OFFERS WELCOMED
- 2nd December 2009 (10.00-12.00) VENUE OFFERS WELCOMED

6) **Future Agenda Items**

7) **Close by 12.00pm for light lunch**

A 30-minute brainstorm on environmental issues that need to be taken account of in the Waste Core Strategy up to 2027 will immediately follow the close of meeting. WPEG members are encouraged to join in, as your views are needed



How we work – A WPEG Agenda

Our priorities

- Based on the best available information
 - National, regional and local datasets
 - Locally commissioned data
 - Citizens panel
 - Local intelligence and expert knowledge
- Areas with performance issues
- Areas that need action through partnership

Our priorities

- Climate change
 - Reducing our contributions
 - Adapting to inevitable change
- Water
 - Amount (development pressures)
 - Quality (diffuse pollution)
 - Flooding
- Biodiversity
 - Protecting what we've got
 - Creating more

WPEG and the Local Area Agreement

- We are accountable for the delivery of 5 LAA priorities:
 - Per capita CO2 emissions (NI186)
 - Tackling fuel poverty (NI187)
 - Adapting to climate change (NI188)
 - Municipal waste landfilled (NI193)
 - Reducing the risk of flooding (local indicator)

WPEG and the Local Area Agreement

- Delivery plans in place for all priorities
- Lead officers assigned to each priority
- Progress tracked through WPEG meetings and Performance Management Group

Summary

- We're well established
- Good and active membership
- Hub for environmental groups and issues
- Accountable for the delivery of County priorities

- Common goal of making Worcestershire's environment even better!