

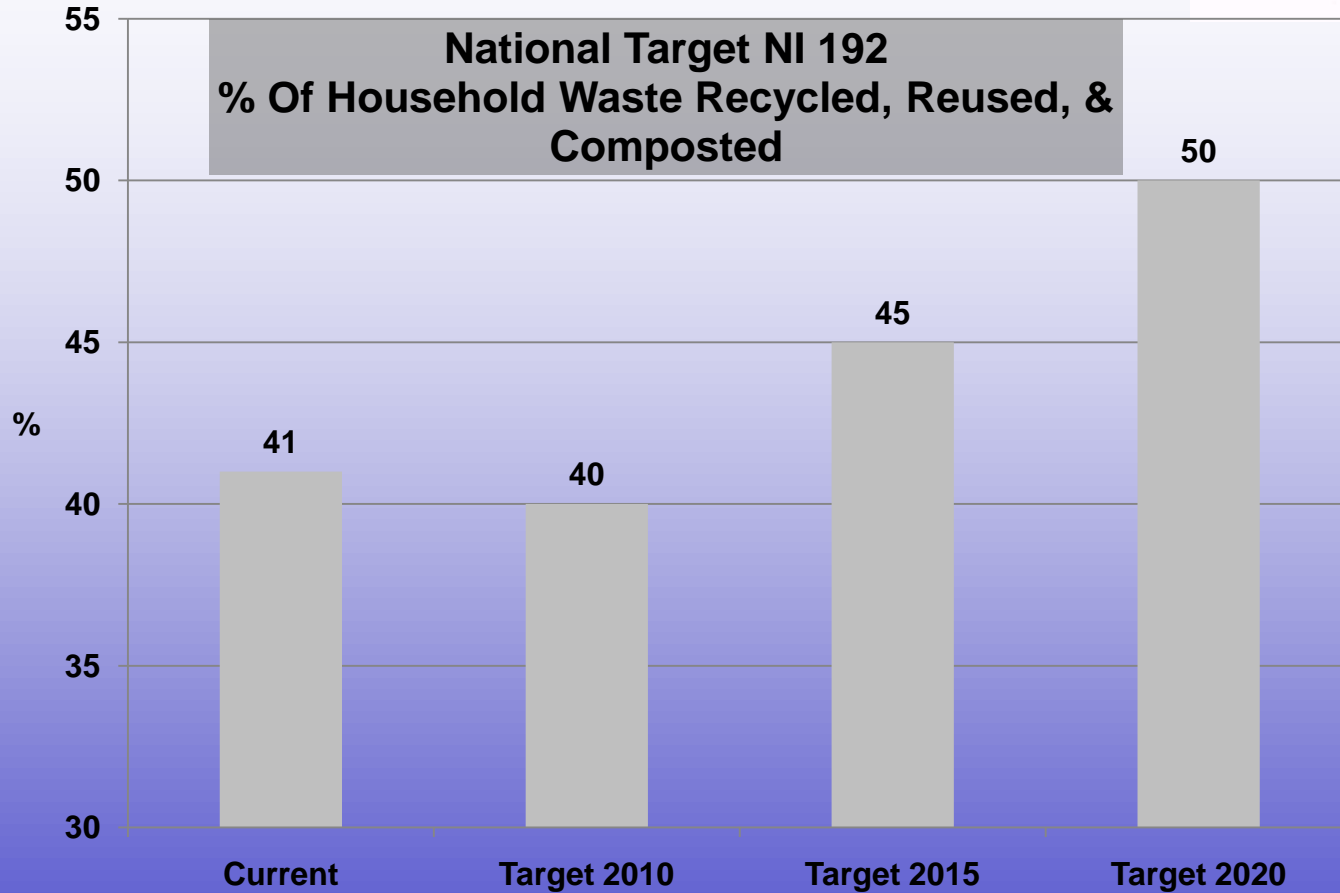
# WASTE

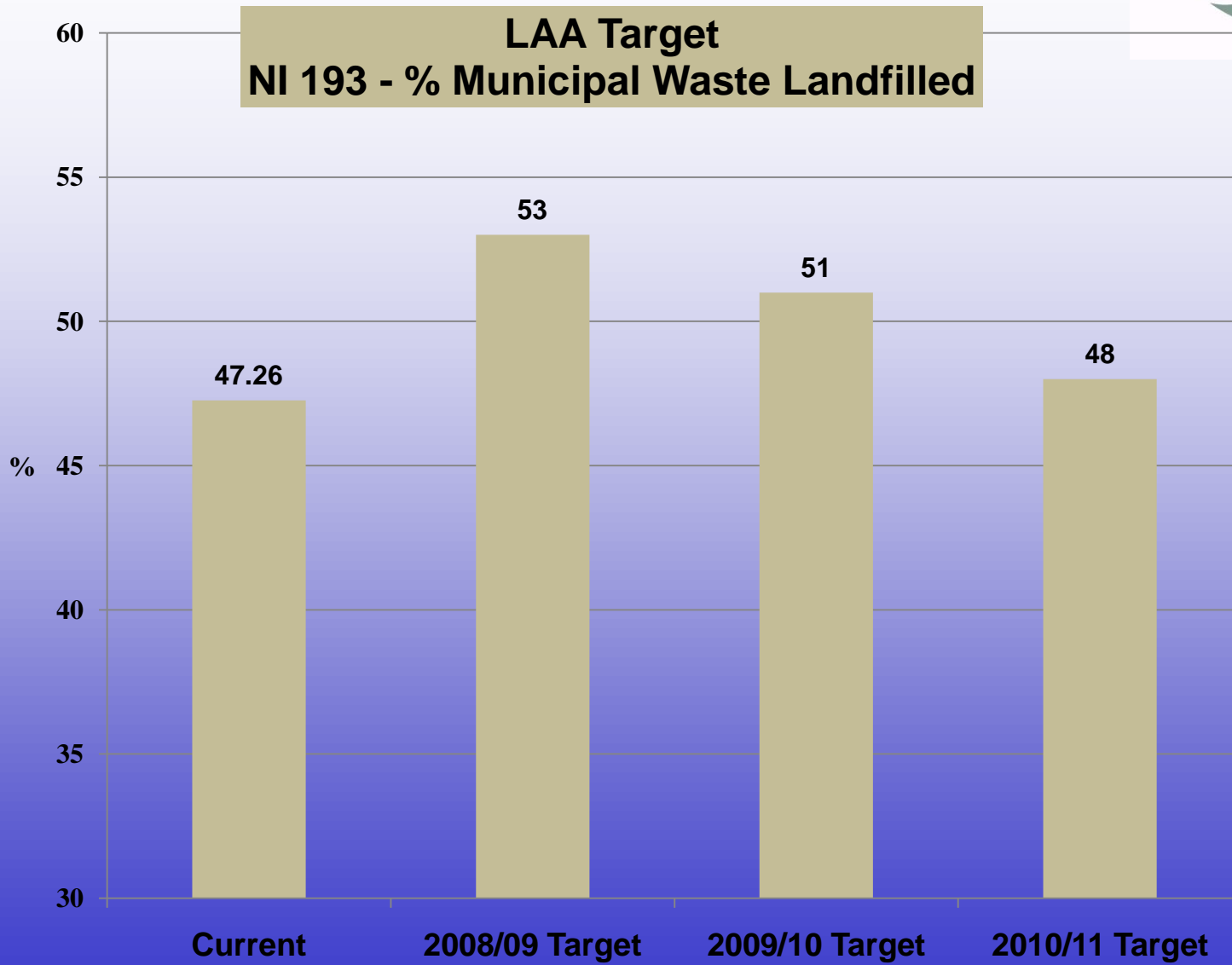
Big future challenges and what we're doing about them

**Paul Beard** (LAA Waste Lead)

# Growth In Municipal Waste



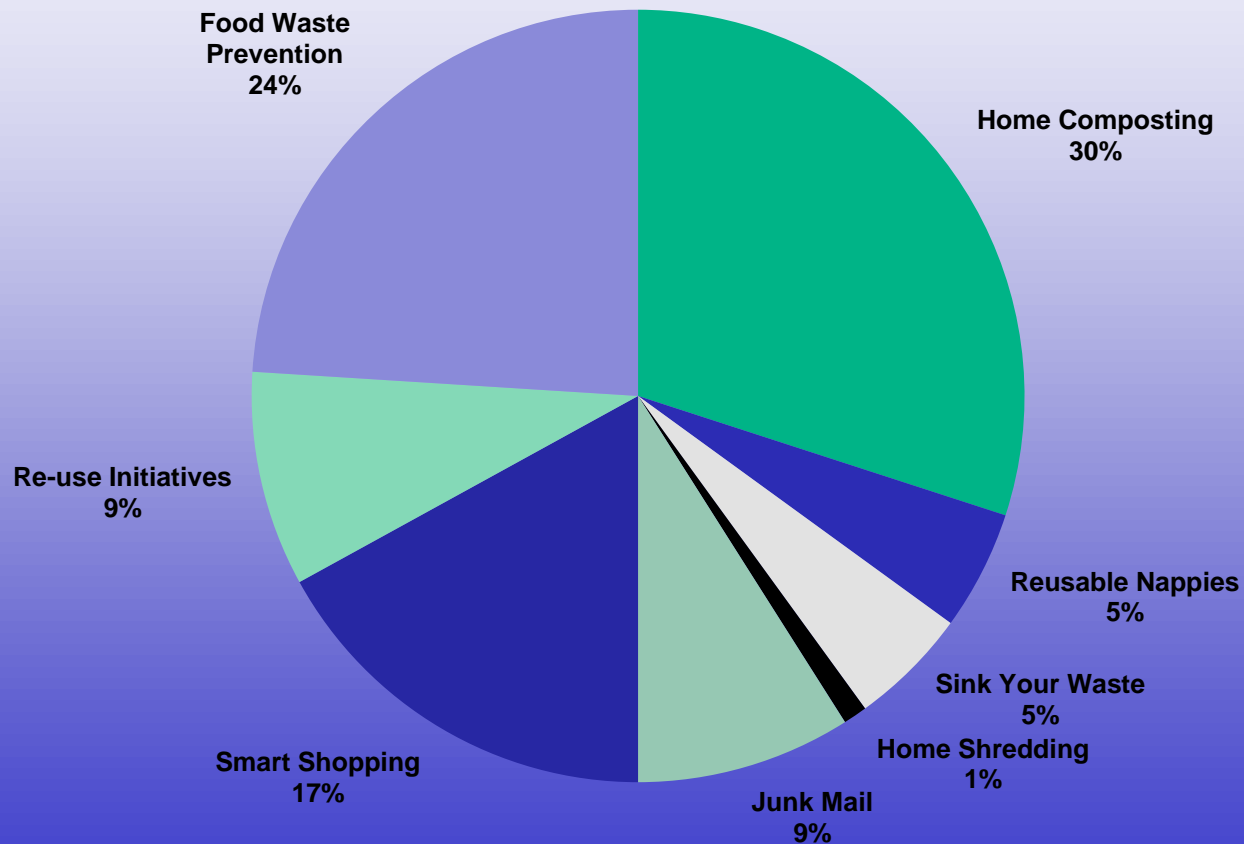




# Reduction & Re-use



**Relative Contribution of Prevention and Re-use Measures to total 'Avoidable' Waste at 2020/21 levels**



# Recycling & Composting Household Waste Sites

Green Waste	Scrap Metal
Cardboard	Paper
Cans	TV's
Wood	Glass Bottles & Jars
Fridges & freezers	Batteries
Textiles	Soil & Rubble
Fluorescent Tubes	Engine Oil

# Recycling & Composting Kerbside Collections

- The Core Collection Service
- 1. All authorities will collect the same materials for recycling through a commingled collection;
- 2. All authorities will prevent waste and increase the amount recycled through
- restricting either:
  - a) Collection frequency and/or
  - b) Container capacity

# Envirosort



# Plastic Sorting

